



**Carleton**  
UNIVERSITY

Canada's Capital University

# **Data Services at Carleton University**

**Jane Fry**

**February 28, 2017**



- **What are data services?**
- **What do we offer?**
- **How to access the data?**
- **How else can we help you?**
- **Sociology Resources**



# Where are we?

- **MacOdrum Library**
- **1<sup>st</sup> Floor, Rm 122**
- **<http://www.library.carleton.ca/find/data>**





- **Part of MADGIC**
- **Provide resources**
- **Help everyone**
- **One restriction for data use**

- **Main service**
  - | Access to data
    - *different data sources*
    - *different types of data*

- **Statistics Canada**
  - | Data Liberation Initiative
  - | Includes
    - *All Statistics Canada's public use data files, databases and geographic files*

- **Public opinion data**
  - | Gallup Canada (1945 - 2000)
  - | Voice of the People (2002 – 2011)
  - | Centre for Research and Information on Canada



- ☐ CANADA
  - ☐ Angus Reid Institute (ARI)
    - ☐ Assisted Suicide, 2014 [Canada]
    - ☐ Baggage Fees, 2014 [Canada]
    - ☐ Canadian Football League (CFL), 2014
    - ☐ Canadian Perceptions of India and Trade 2015
    - ☐ Concussion and Youth Sports [Canada], 2015
    - ☐ Disasters, 2015 [Canada]
    - ☐ Election 2015 [Canada]
    - ☐ Election 2015: The Politics of Health Care [Canada]
    - ☐ Energy Industry, 2014 [Canada]
    - ☐ Gender, Sports, and the Women's World Cup, 2015 [Canada]
    - ☐ Global Threats, 2014 [Canada]
    - ☐ Hockey Night in Canada Year in Review, 2015
    - ☐ Hockey Night in Canada, 2014
    - ☐ Prayer in Canadian Public Life, 2015 [Canada]
    - ☐ Sexual Harassment in the Workplace, 2014 [Canada]
    - ☐ Truth and Reconciliation Commission, 2015 [Canada]
    - ☐ Centre for Research and Information on Canada (CRIC)

## ■ Other surveys

- | Canadian Election Surveys (1965 – 2015)
  
- | Millennium Scholarship Foundation
  - *Education Surveys*
    - Student Financial Survey, 2001 - 2002
    - Ontario University Applicant Survey, 2005

## ■ ICPSR

| Inter-university Consortium for Political and Social Research

| <https://www.icpsr.umich.edu/>

| Data archive

- *16 specialized collections of data*

| World renowned summer program in quantitative methods of social statistics



## ■ ISSP

- | International Social Survey Programme
- | <http://www.issp.org/>
- | Continuing, annual program of cross-national collaboration
- | Started in 1984
- | Recurring themes

# ISSP (cont'd)

- **“Since 1984, ISSP has included 53 nations, the founding four-- Germany, the United States, Great Britain, and Australia-- plus Austria, Ireland, Hungary, the Netherlands, Italy, Israel, Norway, the Philippines, New Zealand, Russia, Japan, Bangladesh, Bulgaria, Canada, the Czech Republic, Slovenia, Poland, Sweden, Spain, Cyprus, France, Portugal, Slovakia, Latvia, Chile, Denmark, Brazil, South Africa, Switzerland, Venezuela, Belgium, Finland, Mexico, Taiwan, South Korea, Uruguay, Croatia, the Dominican Republic, Turkey, Argentina, China, Palestine, Estonia, Lithuania, Ukraine, Iceland, India, Georgia, and Suriname. Also, East Germany was added to the German sample upon reunification. In addition, countries that have fielded all or parts of ISSP studies without joining include Albania, Bosnia, East Timor, Indonesia, Kenya, Kosovo, Macedonia, Montenegro, Serbia, Singapore, Sri Lanka, and Tanzania.”**



- **Globalization of Personal Data (GPD)**
  - | Implications of processing personal and population data in electronic format
  
  - | Canada, USA, France, Spain, Hungary, Mexico, Brazil, China, Japan
  
  - | 2006
  - | Follow-up surveys
    - *2012, 2014*

- **Different data portals**
  - | Search for questions or variables across datasets
  - | Perform online analyses
  - | Create tables, graphs and charts
  - | Download data in SPSS, SAS, Stata, ...

- aka <odesi>
- **Data portal for social science data for Ontario Universities**
- **odesi.ca**
  - | From our website  
(<http://www.library.carleton.ca/find/data>)





- **How to Use ODESI**
- Using the <odesi> data repository
- <odesi>: Navigating the <odesi> Repository
- <odesi>: Searching for Variables
- <odesi>: Finding, Subsetting and Downloading a Survey
- <odesi>: Creating a Cross Tabulation
- <odesi>: Downloading a Full Dataset
  
- <odesi> help guides
- Finding, Subsetting and Downloading a Survey in <odesi> (.pdf)
- Searching for variables (.pdf)



- **CESSDA**

- | Consortium of European Social Science Data Archives
- | Data from over 12 European data producers
- | <http://www.CESSDA.net/>

- **European Social Survey**

- | More than 30 nations
- | 6 rounds completed
- | <http://www.europeansocialsurvey.org/>

## ■ Thematic Collections

### | Criminal Justice

- *National Archive of Criminal Justice Data*

### | Demographic

- *Data Sharing for Demographic Research*
- *U.S. Census Data*

### | Health/Mental Health

- *Health and Medical Care Archive*
- *National Addiction & HIV Data Archive Program*
- *Multiple Chronic Conditions Research Network Data Archive*

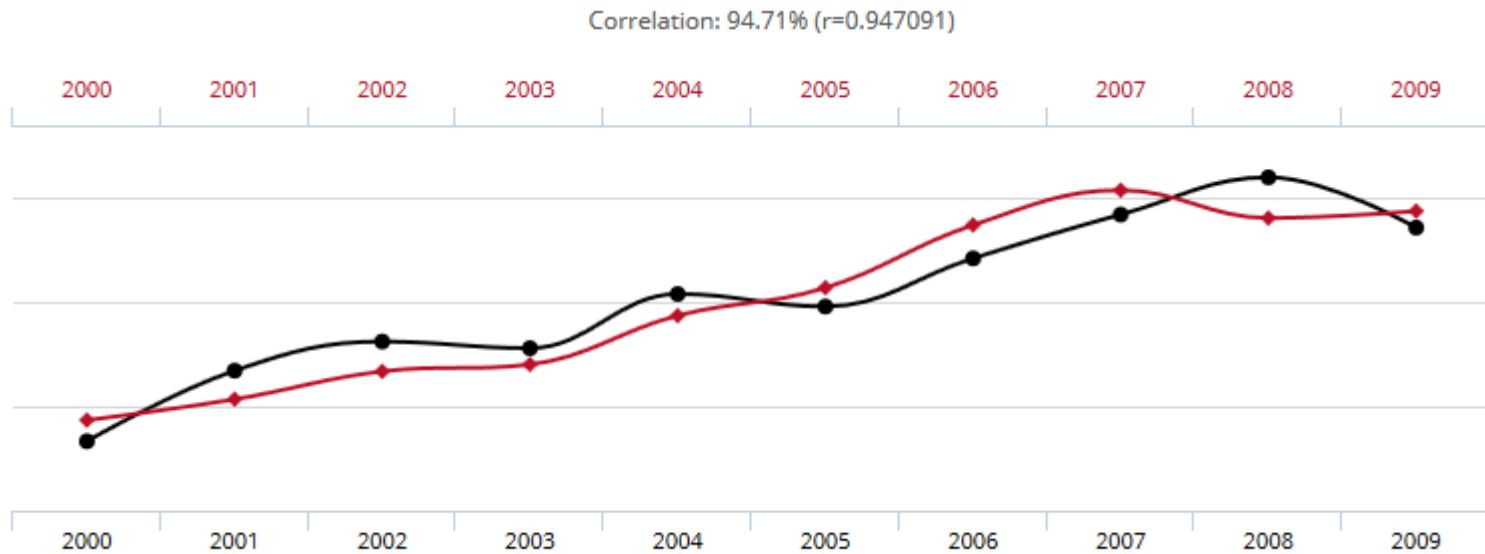
<https://www.icpsr.umich.edu/icpsrweb/content/about/thematic-collections.html>



# What else can we do to help you?

- **Consultation**
  - | on the use of data
  - | Research data management (RDM)
- **Provide general tips and help on using data**

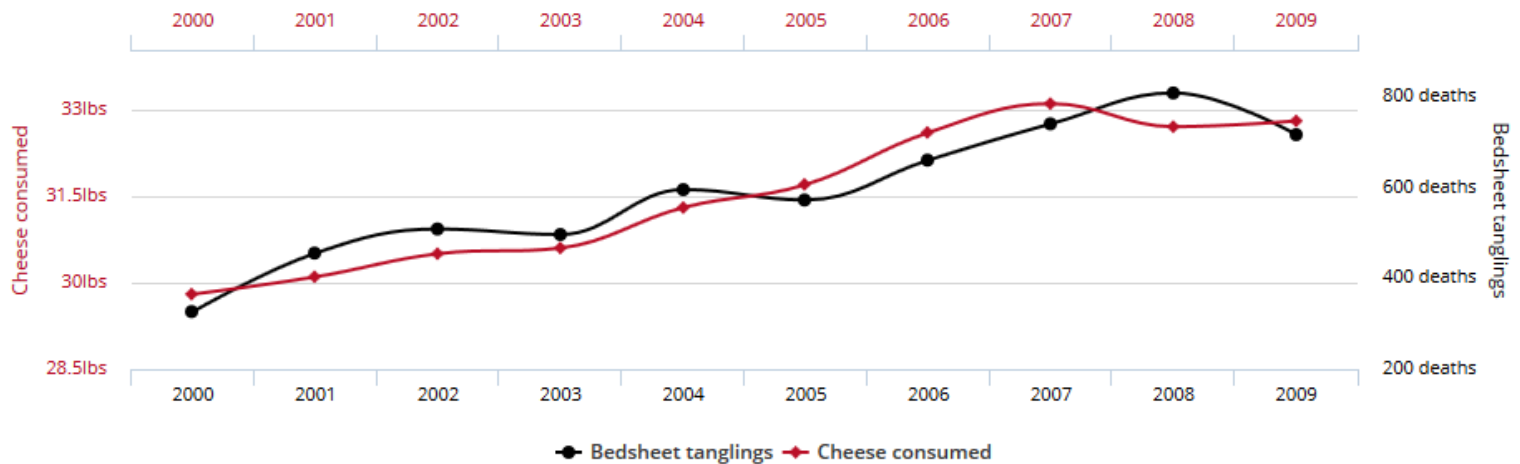
- **Things to remember about surveys**
  - | Sponsorship
  - | Who collected the data
  - | Does the author use anecdotal evidence when data is available
  
- **Think!**





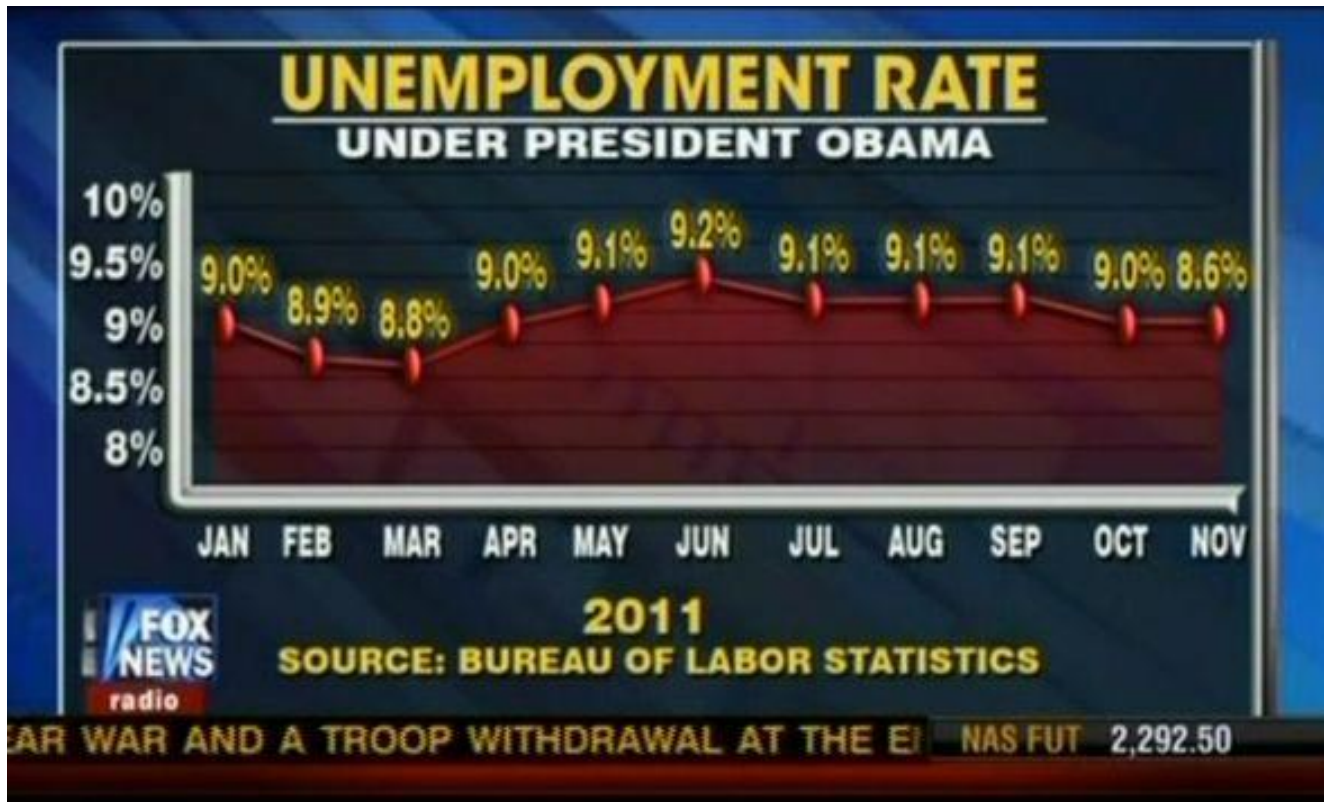
## Per capita cheese consumption correlates with Number of people who died by becoming tangled in their bedsheets

Correlation: 94.71% ( $r=0.947091$ )



Data sources: U.S. Department of Agriculture and Centers for Disease Control & Prevention

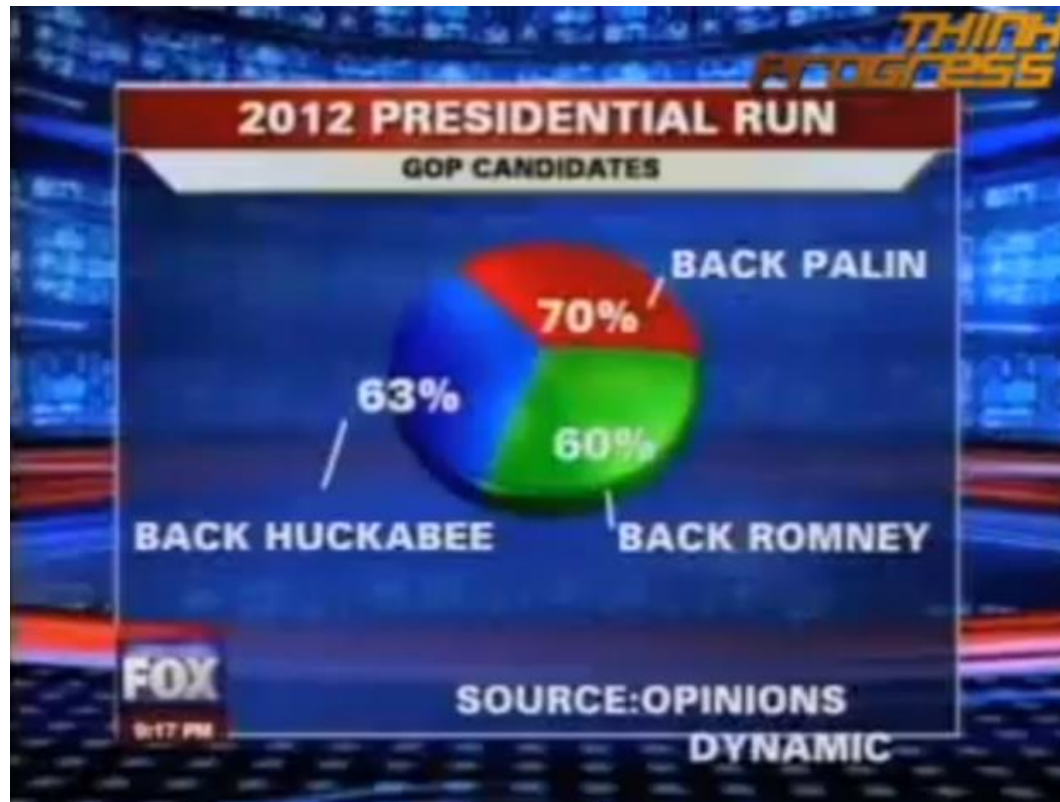
tylervigen.com



Reference: Fox News (December 12, 2011)  
<http://flowingdata.com/category/statistics/mistaken-data/>







Reference: Fox News (2009)

<http://flowingdata.com/category/statistics/mistaken-data/>

- **Very important**
  - | All data should be cited
- **How to cite StatCan products**
  - | <http://www.statcan.gc.ca/pub/12-591-x/12-591-x2009001-eng.htm>
- <https://library.carleton.ca/help/citing-data-and-statistics>

## ■ ODESI

(<http://www.library.carleton.ca/find/data>)

### | Microdata files

- *General Social Survey (1995 to 2014)*
- *Canadian Community Health Survey (2001-2002 to 2014)*
- *Canadian Alcohol and Drug Use Monitoring Survey (2008 to 2012)*
- *National Graduates Survey (1982 to 2013)*
- *Canadian Survey of Giving, Volunteering and Participating (1997 – 2010)*

### | Aggregate data files

- *Homicide Survey (1961 to 2010, B2020)*
- *Tuition and Living Accommodation Costs for Full-Time Students at Cdn Degree-granting Institutions (1993 to 2015, Excel)*
- *Immigration Applications and Approvals (2002 to 2013, B2020)*



**<odesi>** Français

[Browse](#) [Contact](#)

**Find data:**

Enter Search Term Anywhere **+**

**Date:** Earliest Present

**Collections:**

- All of <odesi>
- Statistics Canada (Microdata)
- Statistics Canada (Aggregate data)
- Public Opinion Polls
- Other Data

**Additional Collections:**

- Statistics Canada (Master File)
- CORA
- ICPSR
- Canadian Dataverses

[Learn more](#)

---

**Learning Tools**

- [Video Tutorials](#)
- [User Guide](#)
- [FAQ](#)

**About**

- [About <odesi>](#)
- [Who can Access it](#)
- [Terms of Use](#)



- ODESI (Click to View Categories)
- Agriculture
- Business and Financial
- Census of Population
- Communications and Information
- Consumer Surveys
- Crime and Justice
- Demographics and Population
- Education
- Elections and Politics
- Geography
- Government Finances and Economic Indicators
- Health
- Labour and Employment
- Natural Resources and Environment
- Public Opinion Polls
- Social Surveys
- Trade
- Travel
- Agriculture
- Communications et information
- Démographie et population
- Éducation
- Emploi et main-d'oeuvre
- Enquêtes auprès des consommateurs
- Enquêtes sociales
- Finances publiques et indicateurs économiques
- Géographie
- Industries et Finance
- Justice et criminalité
- Recensement de la population
- Ressources naturelles et environnement
- Santé
- Sondages d'opinion publique
- Voyages



<http://www5.statcan.gc.ca/subject-sujet/index.action?&lang=eng>

## Statistics by subject

- [Aboriginal peoples](#)
- [Agriculture](#)
- [Business, consumer and property services](#)
- [Business performance and ownership](#)
- [Children and youth](#)
- [Construction](#)
- [Crime and justice](#)
- [Culture and leisure](#)
- [Economic accounts](#)
- [Education, training and learning](#)
- [Energy](#)
- [Environment](#)
- [Ethnic diversity and immigration](#)
- [Families, households and housing](#)
- [Government](#)
- [Health](#)
- [Income, pensions, spending and wealth](#)
- [Information and communications technology](#)
- [International trade](#)
- [Labour](#)
- [Languages](#)
- [Manufacturing](#)
- [Population and demography](#)
- [Prices and price indexes](#)
- [Reference](#)
- [Retail and wholesale](#)
- [Science and technology](#)
- [Seniors](#)
- [Society and community](#)
- [Statistical methods](#)
- [Transportation](#)
- [Travel and tourism](#)

- **Excellent resource**
  - | [ICPSR](#) (Inter-university Consortium for Political and Social Research)
- **“A Student’s Guide to Interpreting SPSS Output for Basic Analyses”**



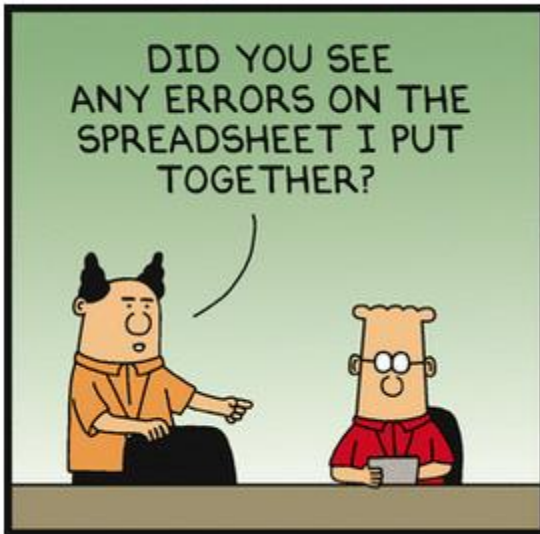
- **Research Help in the Library**

<https://library.carleton.ca/services/research-help>

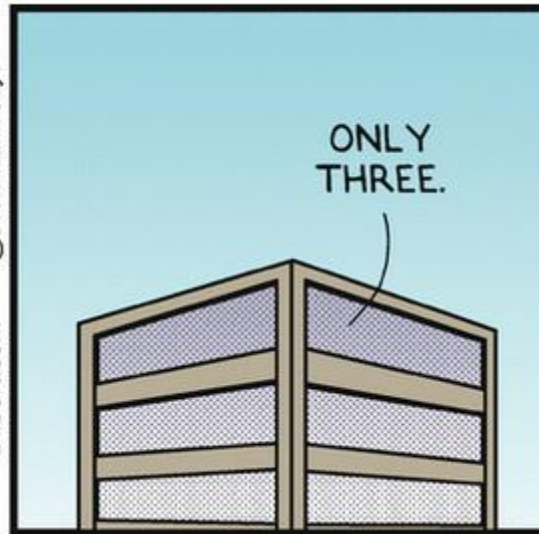
- **We have seen**
  - | Where to get help with Data
  - | What data services we offer
  - | Different data sources and how to access them
  - | What other services we offer
  - | Different Sociology resources



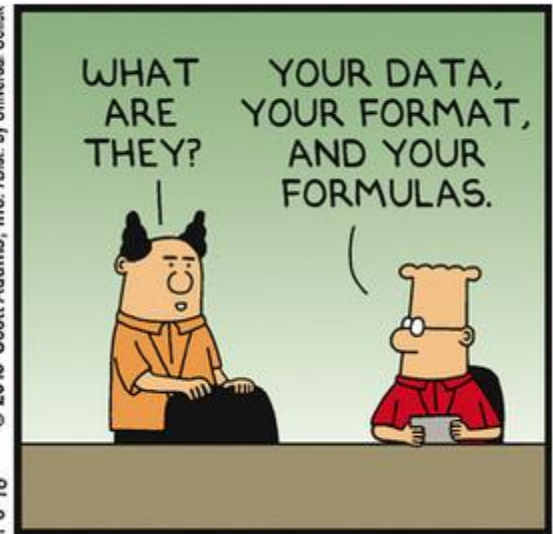
Wednesday January 06, 2016 *Three Problems With Spreadsheet*



Dilbert.com @ScottAdamsSays



© 2016 Scott Adams, Inc. /Dist. by Universal Uclick  
1-6-16



# Contact Information

**Jane Fry**  
**Data Services Librarian**  
**Rm 122**  
**MacOdrum Library**  
**613.520.2600 x1121**  
**[jane.fry@Carleton.ca](mailto:jane.fry@Carleton.ca)**

**<http://www.library.carleton.ca/find/data>**