



Carleton
UNIVERSITY

Canada's Capital University

Data Services at Carleton University

Jane Fry

September 28, 2016

- **What are data services?**
- **What do we offer?**
- **How to access the data?**
- **How else can we help you?**
- **Journalism Resources**

Where are we?

- **MacOdrum Library**
- **1st Floor, Rm 122**
- **<http://www.library.carleton.ca/find/data>**



- **Part of MADGIC**
- **Provide resources**
- **Help everyone**
- **One restriction for data use**

- **Main service**
 - | Access to data
 - *different data sources*
 - *different types of data*

- **Statistics Canada**
 - | Data Liberation Initiative
 - | Includes
 - *All Statistics Canada's public use data files, databases and geographic files*

- **Public opinion data**

- | Gallup Canada (1945 - 2000)

- | Voice of the People (2002 – 2011)

- | Centre for Research and Information on Canada

■ Other surveys

- | Canadian Election Surveys (1965 – 2011)

- | Millennium Scholarship Foundation
 - *Education Surveys*
 - Student Financial Survey, 2001 - 2002
 - Ontario University Applicant Survey, 2005

■ ICPSR

| Inter-university Consortium for Political and Social Research

| <https://www.icpsr.umich.edu/>

| Data archive

- *16 specialized collections of data*

| World renowned summer program in quantitative methods of social statistics

■ ISSP

- | International Social Survey Programme
- | <http://www.issp.org/>
- | Continuing, annual program of cross-national collaboration
- | Started in 1984
- | Recurring themes

ISSP (cont'd)

- **“Since 1984, ISSP has included 53 nations, the founding four-- Germany, the United States, Great Britain, and Australia-- plus Austria, Ireland, Hungary, the Netherlands, Italy, Israel, Norway, the Philippines, New Zealand, Russia, Japan, Bangladesh, Bulgaria, Canada, the Czech Republic, Slovenia, Poland, Sweden, Spain, Cyprus, France, Portugal, Slovakia, Latvia, Chile, Denmark, Brazil, South Africa, Switzerland, Venezuela, Belgium, Finland, Mexico, Taiwan, South Korea, Uruguay, Croatia, the Dominican Republic, Turkey, Argentina, China, Palestine, Estonia, Lithuania, Ukraine, Iceland, India, Georgia, and Suriname. Also, East Germany was added to the German sample upon reunification. In addition, countries that have fielded all or parts of ISSP studies without joining include Albania, Bosnia, East Timor, Indonesia, Kenya, Kosovo, Macedonia, Montenegro, Serbia, Singapore, Sri Lanka, and Tanzania.”**

- **Globalization of Personal Data (GPD)**
 - | Implications of processing personal and population data in electronic format

 - | Canada, USA, France, Spain, Hungary, Mexico, Brazil, China, Japan

 - | 2006
 - | Follow-up surveys
 - *2012, 2014*

- **Different data portals**
 - | Search for questions or variables across datasets
 - | Perform online analyses
 - | Create tables, graphs and charts
 - | Download data in SPSS, SAS, Stata, ...

- aka <odesi>
- **Data portal for social science data for Ontario Universities**
- **odesi.ca**
 - | From our website
(<http://www.library.carleton.ca/find/data>)

- **CESSDA**

- | Consortium of European Social Science Data Archives
- | Data from over 12 European data producers
- | <http://www.CESSDA.net/>

- **European Social Survey**

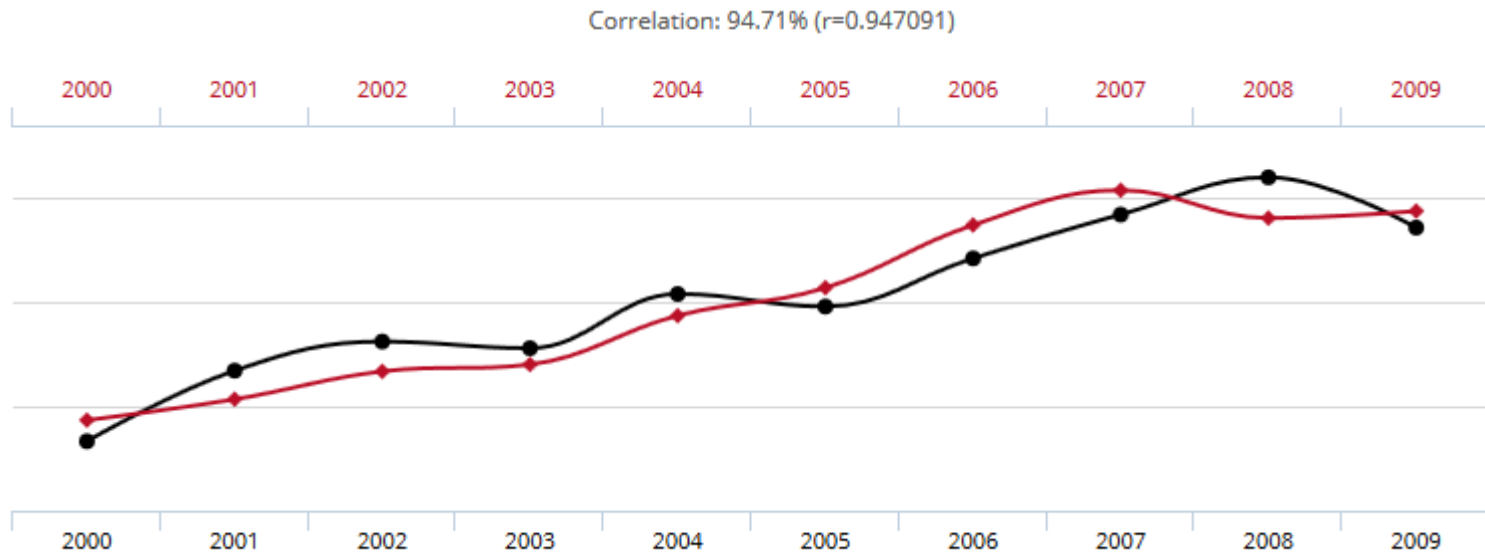
- | More than 30 nations
- | 6 rounds completed
- | <http://www.europeansocialsurvey.org/>

- **Consultation**
 - | on the use of data
 - | Research data management (RDM)
 - *RDM plans*
 - | Dataverse - Carleton Institutional Repository

- **Provide general tips and help on using data**

- **Things to remember about surveys**
 - | Sponsorship
 - | Who collected the data
 - | Does the author use anecdotal evidence when data is available

- **Think!**

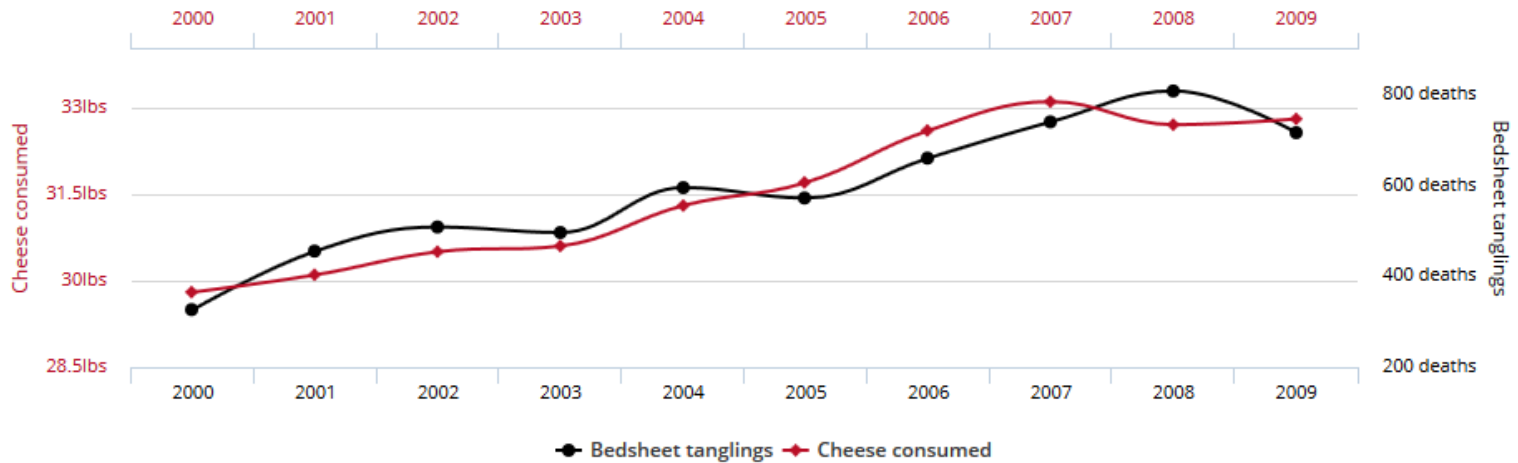




Per capita cheese consumption correlates with

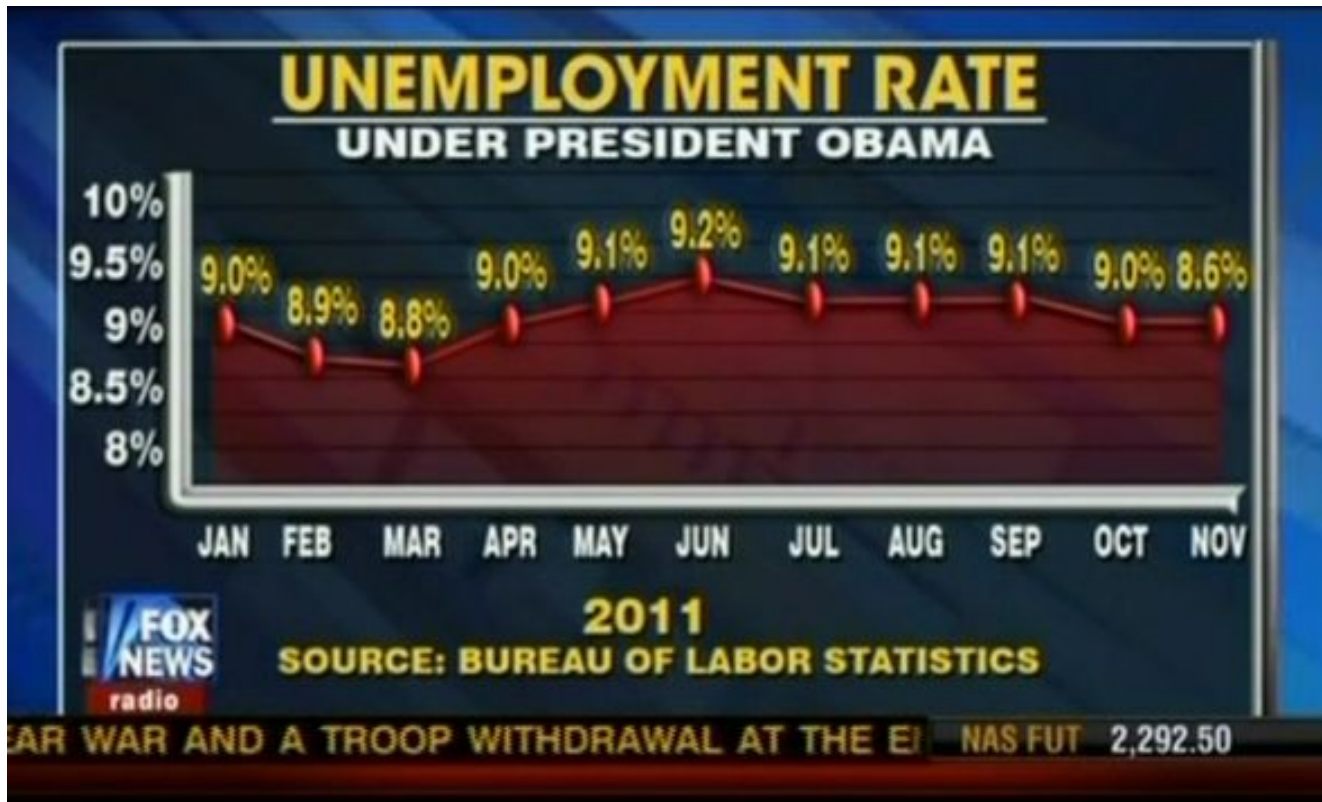
Number of people who died by becoming tangled in their bedsheets

Correlation: 94.71% (r=0.947091)

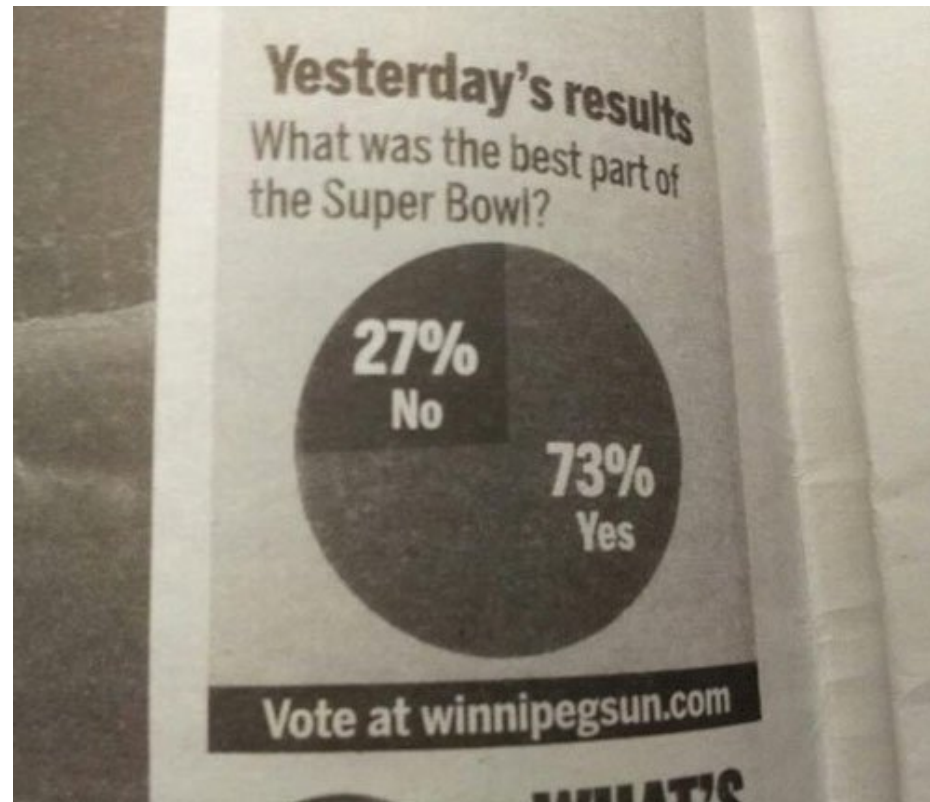


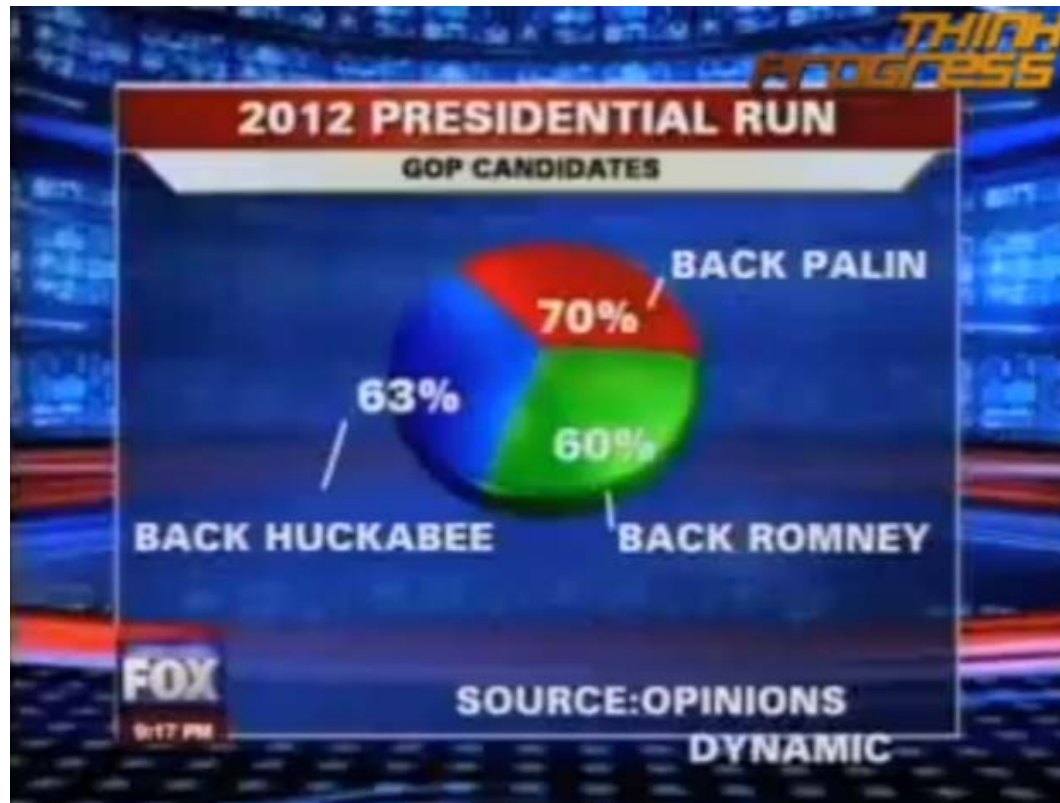
Data sources: U.S. Department of Agriculture and Centers for Disease Control & Prevention

tylervigen.com



Reference: Fox News (December 12, 2011)
<http://flowingdata.com/category/statistics/mistaken-data/>





Reference: Fox News (2009)

<http://flowingdata.com/category/statistics/mistaken-data/>

Example: R & R

- **Political Persuasion and Attitude Change Study: The Los Angeles Longitudinal Field Experiments, 2013-2014**
- **Principal Investigator: Michael J. LaCour**

Reference: <https://www.openicpsr.org/openicpsr/project/100037/version/V8/view>



Irregularities in LaCour (2014)

David Broockman, Assistant Professor, Stanford GSB (as of July 1),
dbroockman@stanford.edu

Joshua Kalla, Graduate Student, UC Berkeley, kalla@berkeley.edu

Peter Aronow, Assistant Professor, Yale University, peter.aronow@yale.edu

May 19, 2015

Summary

We report a number of irregularities in the replication dataset posted for LaCour and Green (*Science*, “When contact changes minds: An experiment on transmission of support for gay equality,” 2014) that jointly suggest the dataset (LaCour 2014) was not collected as described. These irregularities include baseline outcome data that is statistically indistinguishable from a national survey and over-time changes that are unusually small and indistinguishable from perfectly normally distributed noise. Other elements of the dataset are inconsistent with patterns typical in randomized experiments and survey responses and/or inconsistent with the claimed design of the study. A straightforward procedure may generate these anomalies nearly exactly: for both studies reported in the paper, a random sample of the 2012 Cooperative Campaign Analysis Project (CCAP) form the baseline data and normally distributed noise are added to simulate follow-up waves.

Timeline of Disclosure

- January - April, 2015. Broockman and Kalla were impressed by LaCour and Green (2014) and wanted to extend the article’s methodological and substantive discoveries. We began to plan an extension. We sought to form our priors about several design parameters based on the patterns in the original data on which the paper was based, LaCour (2014). As we examined the study’s data in planning our own studies, two features surprised us: voters’ survey responses exhibit much higher test-retest reliabilities than we have observed in any other panel survey data, and the response and reinterview rates of the panel survey were significantly higher than we expected. We set aside our doubts about the study and awaited the launch of our pilot extension to see if we could manage the same parameters. LaCour and Green were both responsive to requests for advice about design details when queried.
- May 6, 2015. Broockman and Kalla launch a pilot of the extension study.

More details about our questions about the data are as follows: [https://www.stanford.io/2bzRWFo](#)



When contact changes minds: An experiment on transmission of support for gay equality

Michael J. LaCour¹, Donald P. Green²

+ Author Affiliations

Science 12 Dec 2014:
Vol. 346, Issue 6215, pp. 1366-1369
DOI: 10.1126/science.1256151

Article

Figures & Data

Info & Metrics

eLetters

 PDF

You are currently viewing the abstract.

View Full Text



This article has been retracted. Please see:

[Is retracted by - June 05, 2015](#)

- **Very important**

- | All data should be cited

- **How to cite StatCan products**

- | <http://www.statcan.gc.ca/pub/12-591-x/12-591-x2009001-eng.htm>

- <https://library.carleton.ca/help/citing-data-and-statistics>

■ ODESI

(<http://www.library.carleton.ca/find/data>)

| Microdata files

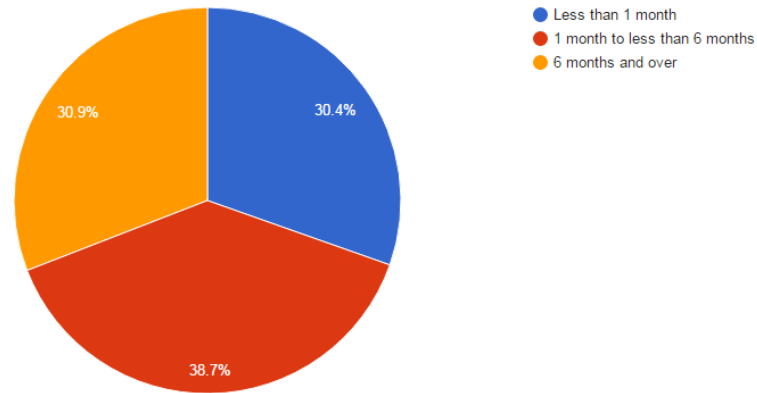
- *Aboriginal People's Survey (1991 to 2012)*
- *Truth and Reconciliation Commission, 2015*
- *Charter of Rights and Freedom, 2002*
- *Canadian Addiction Survey, 2004*
- *Canadian Alcohol and Drug Use Monitoring Survey (2008 to 2012)*

| Aggregate data files

- *Aboriginal People's Survey, 2012 – Education and Employment Experiences (Excel)*



Literal Question: What is the longest period of time for which you have been have been homeless? x



Literal Question

What is the longest period of time for which you have been homeless?

Values	Categories	N
1	Less than 1 month	125
2	1 month to less than 6 months	159
3	6 months and over	127
7	Not asked	19006
8	Not stated	1
9	Don't know	4

Summary Statistics

Cases	N
Valid cases	411
Missing cases	19011



<http://www5.statcan.gc.ca/subject-sujet/index.action?&lang=eng>

Statistics by subject

- [Aboriginal peoples](#)
- [Agriculture](#)
- [Business, consumer and property services](#)
- [Business performance and ownership](#)
- [Children and youth](#)
- [Construction](#)
- [Crime and justice](#)
- [Culture and leisure](#)
- [Economic accounts](#)
- [Education, training and learning](#)
- [Energy](#)
- [Environment](#)
- [Ethnic diversity and immigration](#)
- [Families, households and housing](#)
- [Government](#)
- [Health](#)
- [Income, pensions, spending and wealth](#)
- [Information and communications technology](#)
- [International trade](#)
- [Labour](#)
- [Languages](#)
- [Manufacturing](#)
- [Population and demography](#)
- [Prices and price indexes](#)
- [Reference](#)
- [Retail and wholesale](#)
- [Science and technology](#)
- [Seniors](#)
- [Society and community](#)
- [Statistical methods](#)
- [Transportation](#)
- [Travel and tourism](#)

■ Thematic Collection

- | Resource Centre for Minority Data

- | AHRQ MCC Research Network Data Archive
- | Health and Medical Care Archive
- | National Addiction & HIV Data Archive Program
- | ...

<http://www.icpsr.umich.edu/icpsrweb/content/membership/partners/archives.html>



The State of Homelessness in Canada 2014

Stephen Gaetz; Tanya Gulliver-Garcia; Tim Richter

Youth Rights! Right Now! Ending Youth Homelessness: A Human Rights Guide

Canada Without Poverty; A Way Home

Canada; Canadian Observatory on Homelessness;
FEANTSA



- **More resources**

- | <https://library.carleton.ca/find/data/surveys-subject-public-opinion-polls>

- **And more!**

- | <https://library.carleton.ca/help/public-opinion-polls>

- **What it is**
- **How it benefits you**
- **Data management plans**
- **Data repository (Dataverse)**



- **Research Help in the Library**

<https://library.carleton.ca/services/research-help>

- **We have seen**

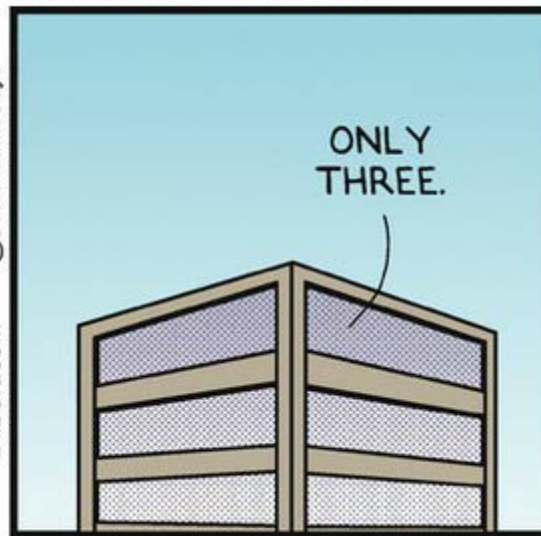
- | Where to get help with Data
- | What data services we offer
- | Different data sources and how to access them
- | What other services we offer
- | Different Journalism resources



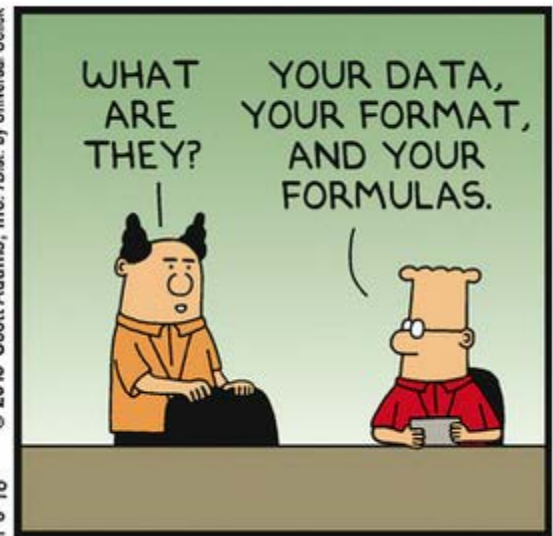
Wednesday January 06, 2016 *Three Problems With Spreadsheet*



Dilbert.com @ScottAdamsSays



© 2016 Scott Adams, Inc. /Dist. by Universal Uclick
1-6-16



Jane Fry
Data Services Librarian
Rm 122
MacOdrum Library
613.520.2600 x1121
jane.fry@Carleton.ca

<http://www.library.carleton.ca/find/data>